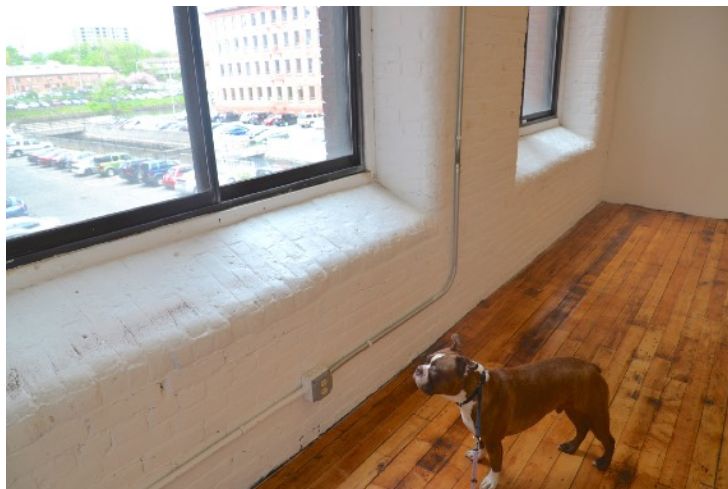
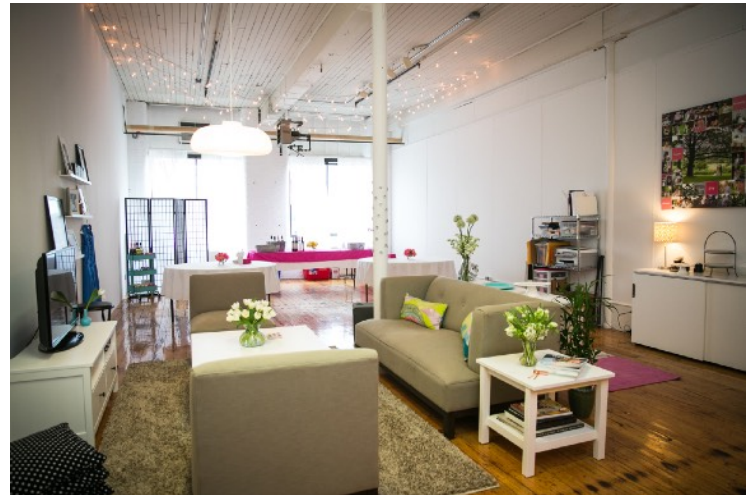


# Open Square, Mill 4-Suite 215

Tons of Natural Light, 870 sq. ft, refinished maple floors



Open Square is the vibrant home to 40 business and retail tenants, and an event space—all sharing the same great atmosphere and amenities: central location in western Massachusetts, tons

of natural light, plenty of parking, card access and camera security system, and a community of businesses you want to be a part of. Mill 4-2nd floor, Suite 215 is approximately 870 sq. ft. of office or studio space \$580/month.\* Tenant pays data. Two-year lease required.

---

**OPEN**  
SQUARE

---

**OpenSquare.com**

marketing@opensquare.com

413-532-5057 x206

\*Actual terms and conditions at lease/purchase signing may vary