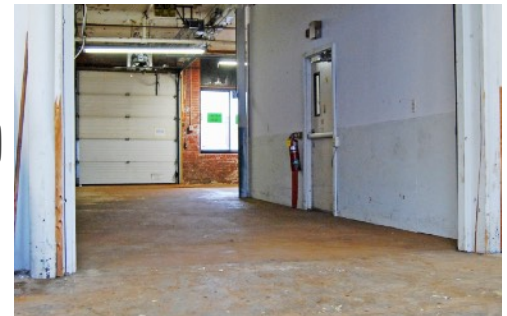
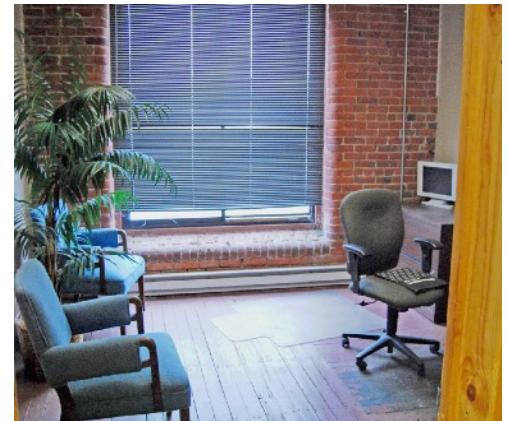
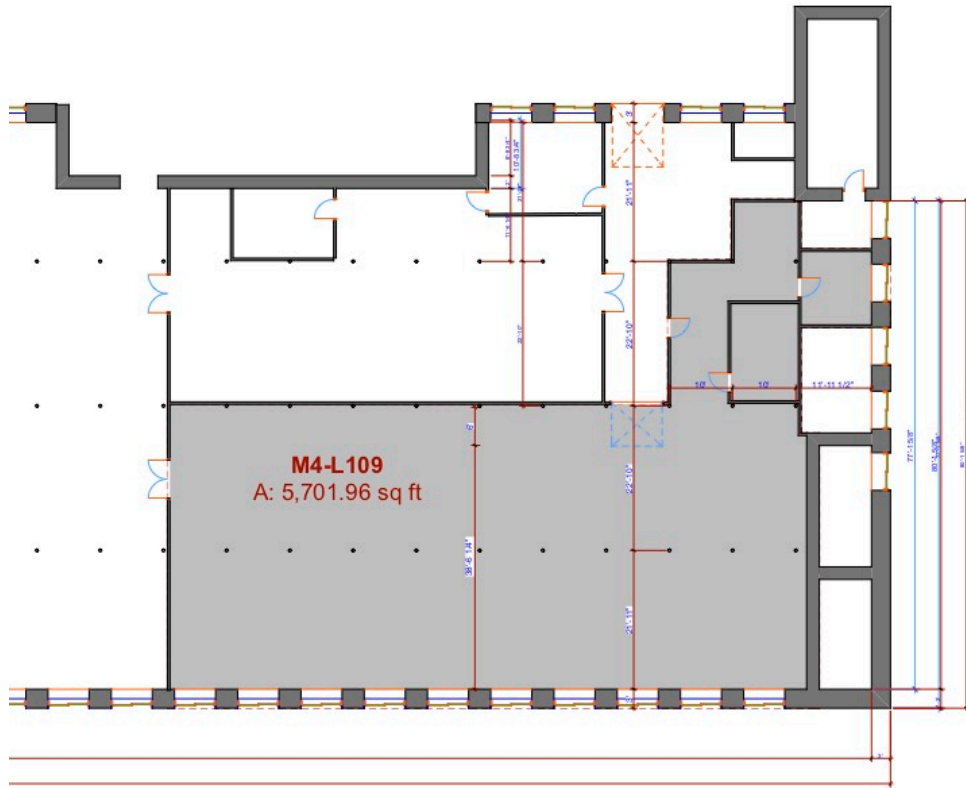


Industrial Space At Mill 4-L109

5,700 sq. ft., Shared Overhead Door



Approximately 5,700 square feet, flooded with natural light, on the Lower Floor of Mill 4. Lease term of five (5) years. Approximately 5,000 square feet for production/packaging/storage PLUS a few office spaces. Amenities include groundfloor storefront access, parking off Lyman Street, steam heat, insulated windows, very low electricity rates, and competitive lease rates. Pre-permitted wells, Bus stop on site. Access to multiple loading docks and freight elevators with quick access to regional highways.

Open Square is the vibrant home to 45+ business and retail tenants, and an event space—all sharing the same great atmosphere and amenities. Due to on-site renewables (two hydro-electric turbines), our building is Zero Net Energy and is therefore the greenest location for your business. This clean site also features high traffic visibility via Race Street (approx. 10,000 cars/day) and Lyman Street (approx. 5,000 cars/day). Email for rates: marketing [at] opensquare [dot] com.