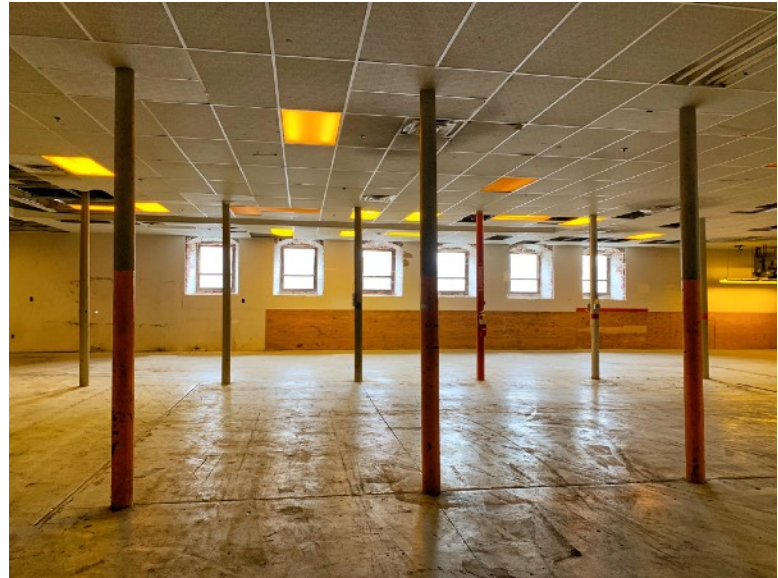


Open Square Mill 1-L102 8-15 Sq. Ft.

On-grade, overhead door and freight dock



Approximately 8,000 square feet expandable to 15,000. Access to a shared overhead door and shared drive-in covered freight dock with adjustable dock leveler.

This space is ground floor, on grade and has a concrete floor in excellent condition. Steam heat. Insulated windows. Low electricity rates. Competitive lease rate. Due to on-site renewables (two hydro-electric turbines), our building is Zero Net Energy and is therefore the greenest location for your business

Location secured via 24/7 swipe card door access and site-wide security camera systems monitoring entrances, lobbies and parking areas.

We are centrally located to both north-south and east-west highways, minutes to Routes 91, 391 and the MassPike. Space currently has drop ceiling that could be removed.

OPEN
SQUARE

OpenSquare.com

FB: OpenSquare

TW: @Open_Square

413-532-5057 x206

marketing@opensquare.com

1-7 Open Square Way

Holyoke MA 01040