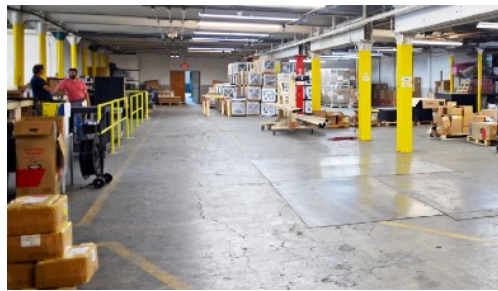
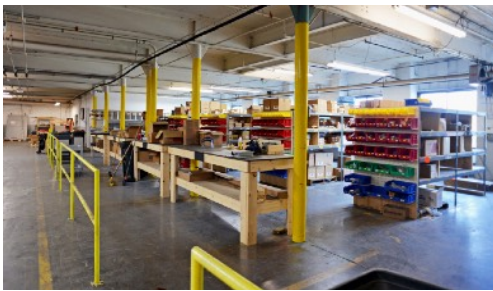
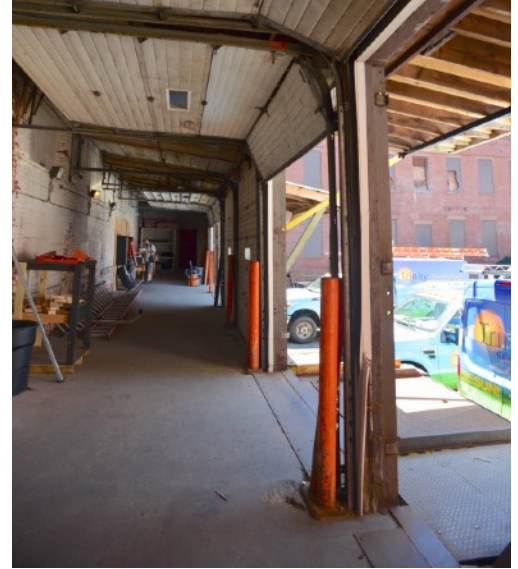


Warehouse/Industrial Space

14,500 sq. ft., Loading Docks, Ready to Occupy



- Steam heat
- 480 volt electric service
- Abundant natural light
- Sprinkler systems

- Insulated windows
- Low electricity rates
- Bus stop on site
- Concrete floor
- 12' 6" ceiling

- Overnight parking
- Multiple loading docks with quick access to regional highways.

OpenSquare.com

marketing@opensquare.com

FB: OpenSquare

TW: @Open_Square

413-532-5057 x206

4 Open Square Way

Holyoke, MA 01040

Open Square has centrally-located, clean, warehouse/light industrial/storage space just minutes from the area's interstates and Bradley International Airport. Open Square is the vibrant home to a variety of business and retail tenants and an event space. This ready to occupy space with lockable security gate and excellent exterior lighting.

*Actual terms and conditions at lease/purchase signing may vary