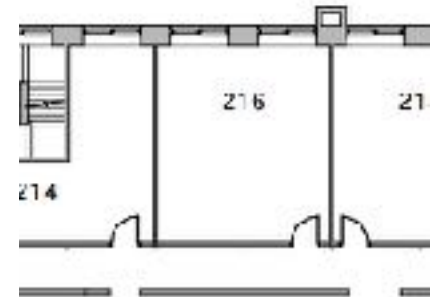
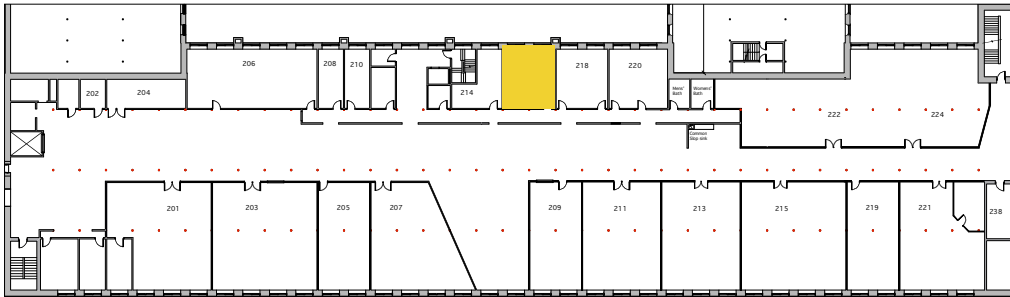


Creative Office Space—Mill 4, Suite 216

498 sq. ft., creative work space, tons of natural light



Open Square is the vibrant, interesting and diverse home of 40+ business and retail tenants, an event space, and Comfort Bagel—all sharing the same warm atmosphere and modern amenities. Due to on-site renewables (two hydro-electric turbines), our building is Zero Net Energy, making us the greenest location for your creative company.

Suite 216 is a square shaped office space located in Mill 4, on our floor dedicated to creative companies. Suite 216 has neutral carpet and two large windows. Painted wood ceiling and walls. M4's second floor features a wide common hallway, a bright common gallery area and other creative businesses. There is lots of onsite parking. The buildings have 24/7 swipe card access and an onsite network of security cameras.

OpenSquare.com

marketing@opensquare.com

413-532-5057 x206

4 Open Square Way
Holyoke, MA 01040

Suite 216 is approximately 498 square feet. It is \$495/month*. Minimum two-year lease and excellent credit required. Two months rent (for security deposit) and a pro-rated first month rent due at lease signing. Rent is inclusive of all but broadband. The building is heavily wired for data with three providers to choose among.

*Actual terms and conditions at lease/purchase signing may vary