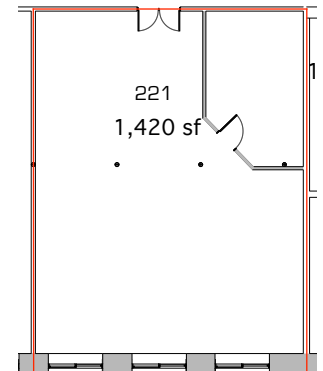
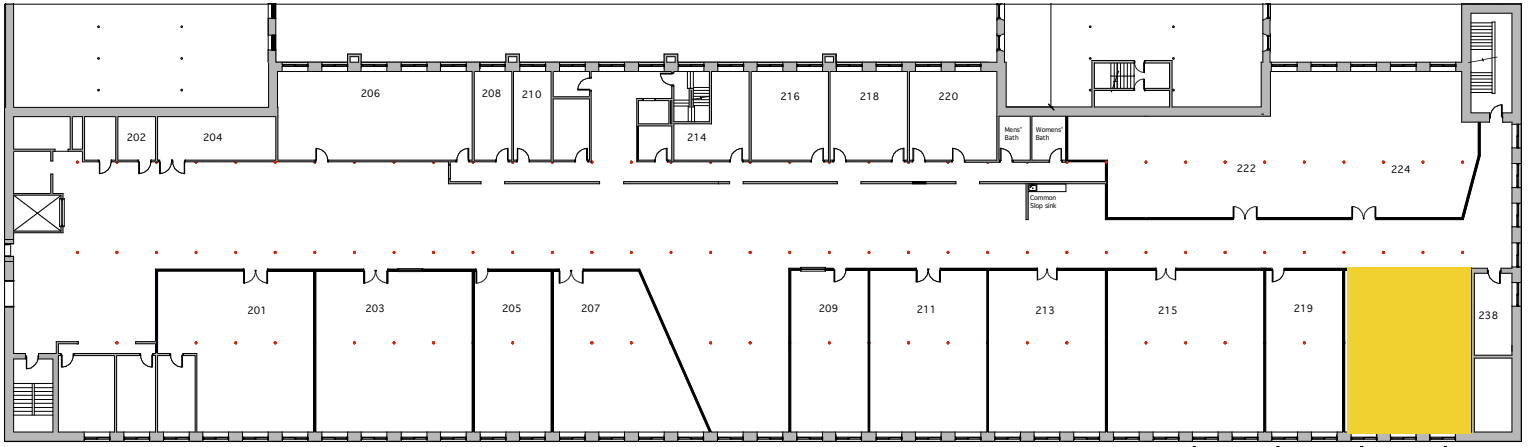


# Open Square, Mill 4-Suite 221

*Tons of light, approx. 1,420 sq. ft., refinished maple floors*



One large 3-bay studio on the 2nd floor of Mill 4, all the way at the end of the hallway for a business in a creative field. Not appropriate for creative companies whose work makes noise or produces odors.

Lots of parking. 24/7 swipe card access and site-wide camera security system. Central location in Pioneer Valley. Three high speed providers to choose from in building. White painted wood ceilings & brick wall. Luscious refinished maple floors. Three large windows flood the space with natural light. \$946.67/month\*. Two-year lease and excellent credit required. Two months rent for security deposit and pro-rated first month rent due at lease signing.

**OPEN**  
SQUARE

\*Actual terms and conditions at lease/purchase signing may vary